

# USES OF OUR PRODUCTS



1625 Miami St., South Bend, IN 46613

888-698-8705, fax 574-234-2240

[www.masonrycosmetics.com](http://www.masonrycosmetics.com)



© 2013 ALL RIGHTS RESERVED



## Blend Repaired Brick

This brick home was damaged by the impact of a car and the original brick were no longer manufactured. The contractor found the closest match in size and texture; the color, however, was not close. The repaired area is now invisible.







# Match Replaced Brick

Water damaged this wall so the brick had to be replaced.



# Match Mortar and Brick

The garage door was replaced with a wall. Now it just disappears.





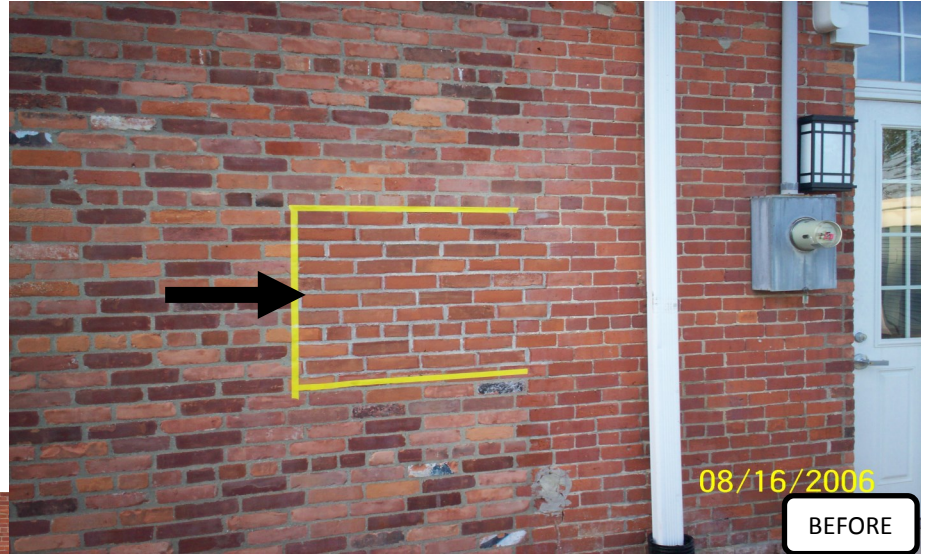
# Enhance Curb Appeal





# Restore

Test area is taped off.  
After approval, this area  
is expanded over the  
entire wall.



We can help you with all your  
restoration projects!



Our color specialist is starting to  
develop the color for a sample  
panel which was requested by the  
building owner.

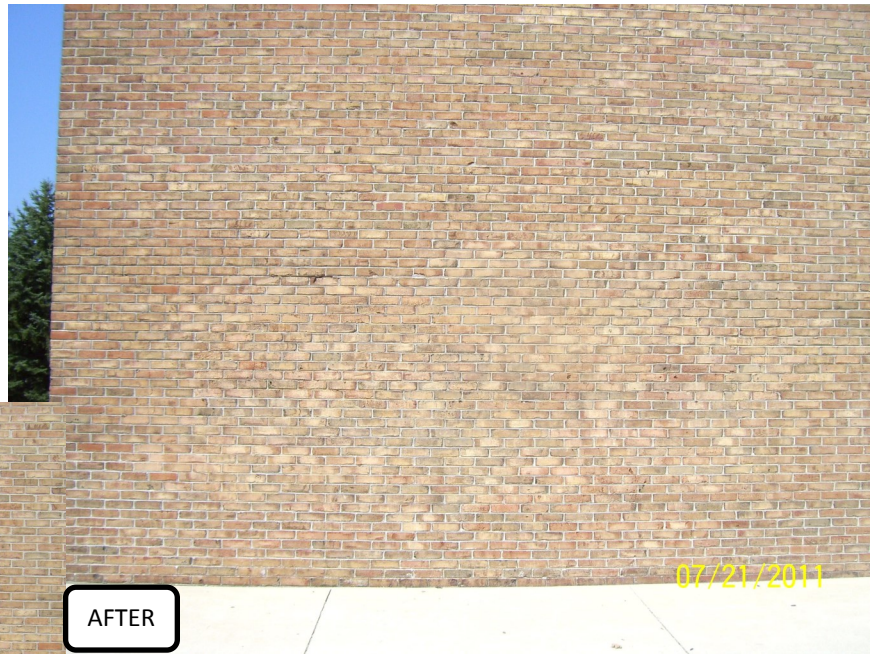
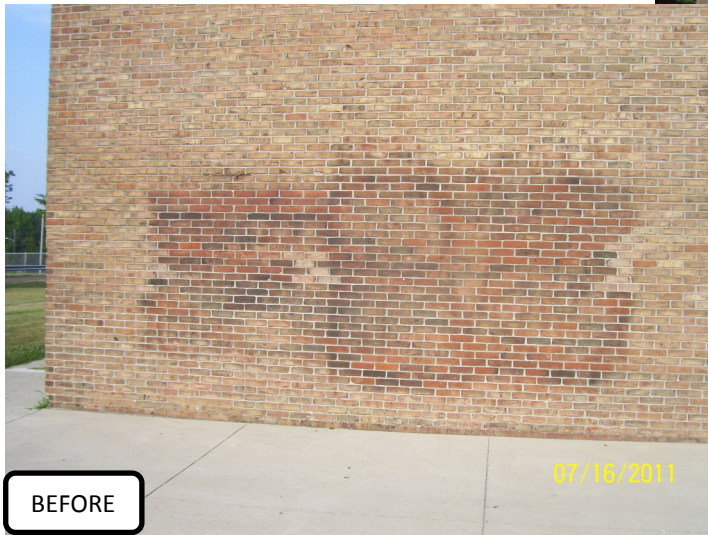


Sample panel complete.

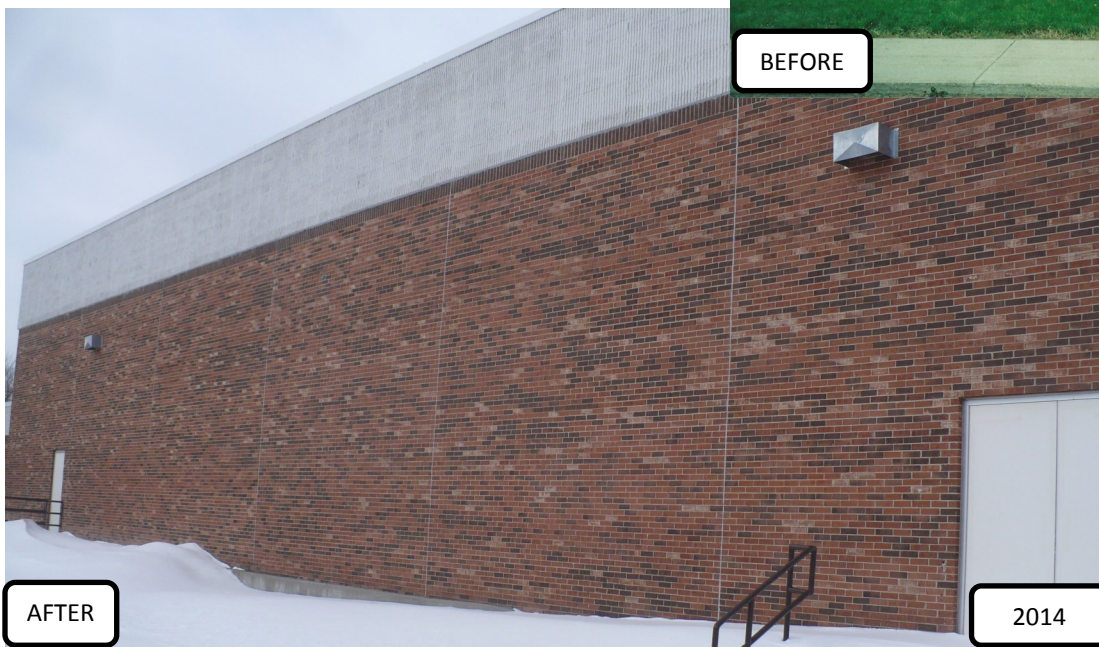


# Conceal Graffiti

The wall was damaged by harsh cleaning while trying to removing graffiti.



Anchor Bay High School,  
New Baltimore, MI—2002



Power washing  
blasted the faces off  
these brick but with  
color correction,  
it looks good as new,  
even 12 years later.





## Restore Color

Manufactured Stone damaged by improper cleaning removing the product's color.



## Enhance Natural Stone

Stone can be changed to either blend or contrast.







# Match Block

The corner block did not match the wall block; now they do.



Church,  
Lansing, MI—2000

Block on this church was  
stained in 2000; still looks  
great after 14 years.





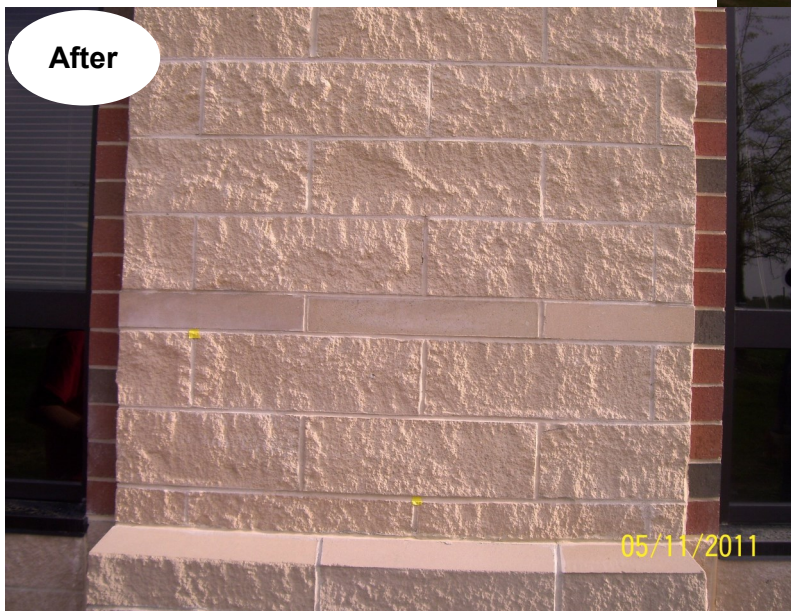
# Correct Architectural Block

Two different runs of buff colored stone were laid in this wall.

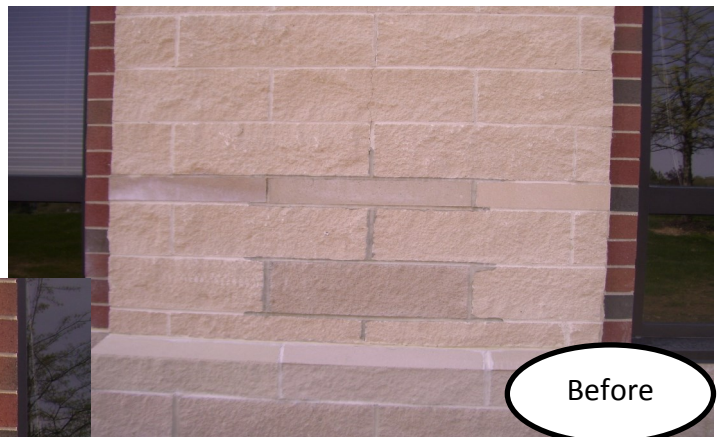


Left untouched to see before & after

## Blend Block & Mortar



After



Before

Three pieces of architectural block were damaged and had to be replaced.





# Blend



Poorly blended wall with areas of unwanted light brick.





# Color Correct

Meridian Mall,  
Okemos, MI—2001

A 100,000 brick addition was constructed in 2001. The original brick were no longer made. MCI worked with the brick dealer who found a good donor brick from Belden Brick Co. and then stained the new to match the existing.



Still The Best after 13 years.